
Polyclonal Antibody to Epitempin-1 (LGI1)

PAB34020 100ul

[PROPERTIES]

Source: Polyclonal antibody preparation

Host: Rabbit

Purification: Recombinant Protein affinity chromatography.

Traits: Liquid

Concentration: 500ug/ml

Ig Isotype:IgG

UOM: 100μl

Cross Reactivity: Mouse, Rat; Porcine (Pig)

Applications: WB; IHC; ICC; IP;Elisa.

[IMMUNOGEN]

Immunogen: Recombinant Human LGI1 protein expressed in E.coli.

[APPLICATIONS]

Western blotting: 0.5-2μg/mL;

Immunohistochemistry: 5-20μg/mL;

Immunocytochemistry: 5-20μg/mL;

Optimal working dilutions must be determined by end user.

[FORMULATION]

Form & Buffer: Supplied as solution form in 0.01M PBS, pH7.4, containing 0.05%

Proclin-300, 50% glycerol.

[STORAGE AND STABILITY]

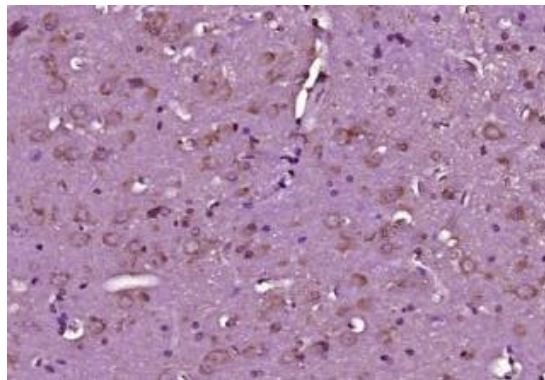
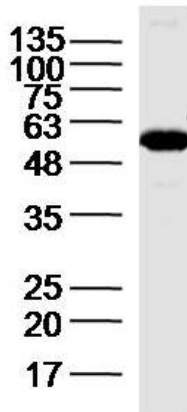
Storage: Avoid repeated freeze/thaw cycles.

Store at 4°C for frequent use.

Aliquot and store at -20°C for 12 months.

Stability Test: The thermal stability is described by the loss rate. The loss rate was determined by accelerated thermal degradation test, that is, incubate the protein at 37°C for 48h, and no obvious degradation and precipitation were observed. The loss rate is less than 5% within the expiration date under appropriate storage condition.

[IDENTIFICATION]



Sample: Heart (Mouse) Lysate at 20 ug

Paraformaldehyde-fixed, paraffin embedded (mouse brain tissue)

[IMPORTANT NOTE]

The kit is designed for research use only, we will not be responsible for any issue if the kit was used in clinical diagnostic or any other procedures.